

Spring type

GZ438

Socket set

Ontology

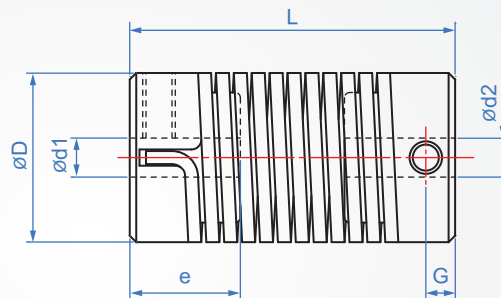
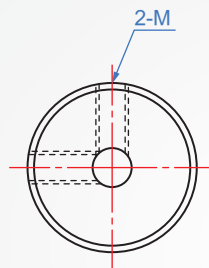
Spring

Hex head screw

Zinc alloy

Spring steel

SUS



How to order

GZ438 - 16A - 5x5
 TYPE D d1xd2

D	Inner hole designation		L	e	G	M	weight(g)	Max. torque (N · m)	Max. return speed (rpm/min)	Moment of inertia (kg · m ²)	Allowable axial displacement (mm)
	d1-d2 min.	max.									
16	5	~ 10	27	11.45	4	M3	30	0.5	3000	1.02 x 10 ⁻⁶	±0.1
16A	5	~ 10	35	12.5	3.8	M4	70				
26	6	~ 14	50	17	5	M5	130	1.5	1.15 x 10 ⁻⁵		

unit : mm

Allowable declination : 8°

Che Na

886-2688-3177

info@chena.com.tw

 886-22688-3188
886-2688-3881~3

 No.21, Guangrong St. Shulin Dist.,
New Taipei City 238 Taiwan (R.O.C.)