

Set screw
WA736
Mold

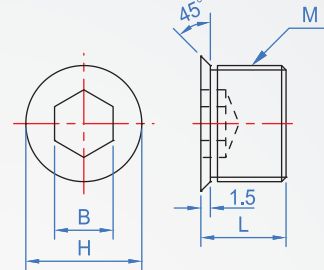
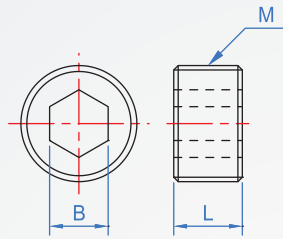
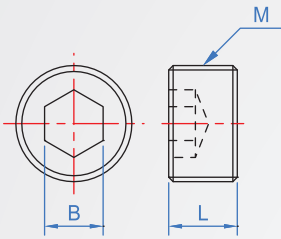


Material	Finish
S45C	Heat treatment + blackening

A : Standard

B : Through hole

C : Drill-rod Punch



How to order

WA736 - M5 - 5 -

TYPE M L

Selection

Standard..... A

Through hole..... B

Drill-rod Punch..... C

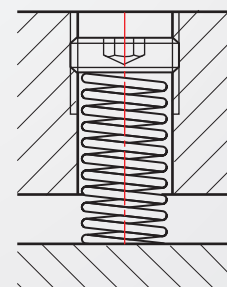
Standard \ through hole

TYPE	①		②		Unit : mm
	M	Pitch	L	B	
A (Standard)	M2.5	0.45	3	1.3	
	M3	0.5	3	1.5	
	M4	0.7	4	2	
	M5	0.8	5	2.5	
	M6	1.0	6	3	
A (Standard)	M8	1.25	6 ~ 8	4	
	M10	1.5	6 ~ 10	5	
	M12	1.5		6	
	M14	1.5		8	
	M16	1.5		10	
	M18	1.5		12	
	B (Through hole)	M20	1.5	8 ~ 12	14
		M22	1.5		17
		M24	1.5		18
		M25	1.5		18
M26		1.5	18		
A (Standard)	M27	1.5	18	17	
	M28	1.5		17	
	M30	1.5		17	
	M33	1.5		17	
	M36	1.5		17	
A (Standard)	M38	1.5	18	17	
	M40	1.5		17	
	M42	1.5		17	
	M45	1.5		17	

Drill-rod Punch

TYPE	①		②		Unit : mm	
	M	Pitch	L	B		
C (Drill-rod Punch)	M6	1.0	8	3	9	
	M8	1.25	10	4	11	
	M10	1.5	10 ~ 12	5	13	
	M12	1.5		6	15	
	M14	1.5		7	17	
	M16	1.5		8	19	
	M18	1.5		10	21	
	C (Drill-rod Punch)	M20	1.5	10 ~ 15	10	23
		M22	1.5		12	25
		M24	1.5		14	27
M25		1.5	14		28	
M26		1.5	12 ~ 15	14	29	
M27		1.5		17	30	
M28		1.5		17	31	
M30		1.5		17	33	
M33	1.5	17	36			

※Use examples
To fix and adjust the spring



Copyright © CHENA INDUSTRIAL CO.,LTD ALL RIGHTS RESERVED.