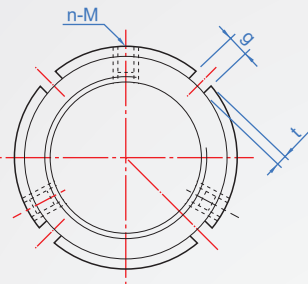
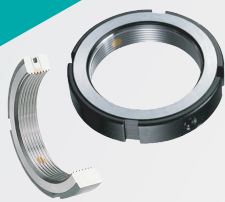
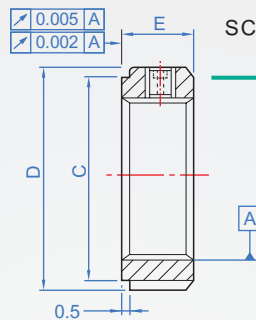


Precision Lock Nut YSR Radial Lock



※The locking method is radial three-point locking, and its thickness. Compared with other products, it is thinner and saves space.



Material	Hardness	Thread Accuracy	Run Out
SCM440	HRC28~32	ISO 4H (Turning)	0.005mm
		ISO 4H (Grinding)	0.002mm

How to order

YSR - M8 - 0.75 -

TYPE Screw Pitch

Select thread accuracy

Internal thread turning...

Internal thread grinding.. G

單位: mm

螺紋	Pitch	D	C	E	g	t	n-M	鎖緊力矩 max. Nm	軸向負載 Km	鬆脫力矩 Nm	
M 6	0.5	16	11	8	3	2	2- M4 x 0.7	3.5	-	-	
M 8	0.75	18	13						-	30	17.6
M10	0.75	20	16						-	35	18.1
M12	1	25	21						-	40	19.1
M12	1.25	28	23						-	40	19.1
M14	1.5	30	25						-	-	-
M15	1	32	27	10	4	2	2- M5 x 0.8	4.5	60	20.6	
M16	1.5	35	30						-	80	21.6
M17	1	38	33						-	-	-
M18	1.5	42	37						-	90	24
M20	1	45	40						-	90	24
M20	1.5	45	40						-	-	-
M22	1.5	52	45	12	5	2.5	3- M6 x 1.0	8	-	-	
M24	1.5	55	49						-	130	26.5
M25	1.5	58	52						-	160	28.4
M27	1.5	62	56						-	-	-
M30	1.5	65	59						-	190	34.3
M33	1.5	68	62						-	-	-
M35	1.5	70	64	14	6	2.5	3- M8 x 1.25	18	-	-	
M36	1.5	73	66						-	210	36.3
M39	1.5	75	68						-	240	56.9
M40	1.5	77	70						-	-	-
M42	1.5	77	70						-	300	63.7
M45	1.5	80	73						-	340	68.6
M48	1.5	85	78	16	7	3	3- M10 x 1.5	35	380	96.1	
M50	1.5	92	84						-	460	112.7
M52	1.5	95	86						-	-	-
M55	2	98	90						-	490	137.3
M56	2	100	92						-	520	145.1
M60	2	105	96						-	-	-
M64	2	110	102	18	8	3.5	3- M12 x 2	60	620	149	
M65	2	120	108						-	650	168.6
M68	2	125	113						-	380	178.4
M70	2	125	113						-	710	193.1
M72	2	130	118						-	740	210.8
M75	2	140	125						-	770	215.7
M80	2	145	132	20	10	4	3- M10 x 1.5	35	800	230.4	
M85	2	150	137						-	830	250
M90	2	155	142						-	860	264.7
M95	2	160	147						-	890	274.5
M100	2	165	152						-	920	294.1
M105	2	175	160						-	950	328.4
M110	2	180	165	22	12	5	3- M10 x 1.5	35	980	372.5	
M115	2	190	175						-	1010	402
M120	2	195	180						-	1040	421.6
M125	2	200	180						-	1070	460.8
M130	2	210	190						-	1100	509.8
M135	2	220	200						-	1130	529.4
M140	2	230	205	24	14	6	3- M10 x 1.5	35	1160	558.8	
M145	2	240	215						-	1220	558.2
M150	2	240	215						-	1280	627.5
M155	3	250	225						-	1340	666.7
M160	3	250	225						-	-	-
M165	3	250	225						-	-	-
M170	3	250	225	26	14	6	3- M12 x 2	60	1220	558.2	
M175	3	250	225						-	1280	627.5
M180	3	250	225						-	1340	666.7
M185	3	250	225						-	-	-
M190	3	250	225						-	-	-
M195	3	250	225						-	-	-
M200	3	250	225	28	16	7	3- M12 x 2	60	1220	558.2	
M205	3	250	225						-	1280	627.5
M210	3	250	225						-	1340	666.7
M215	3	250	225						-	-	-
M220	3	250	225						-	-	-
M225	3	250	225						-	-	-

Copyright © CHENA INDUSTRIAL CO.,LTD ALL Rights Reserved.