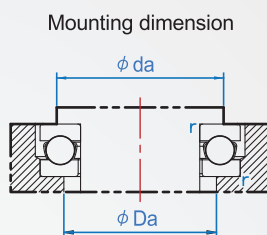
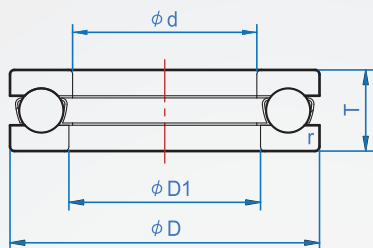


Thrust ball bearings



Track	Holder
Steel SUJ2	Engineering plastics (Heat 120°C)

How to order



Inside diameter 10 ~ 50mm

Code No.	Main dimension(mm)					Basic rated(N)		Allowable rotating speed (rpm)		Mounting dimension(mm)			Quality (g)
	d	D	D1	T	r (min)	Dynamic load Cr	Static load Cor	Grease	Lubricating oil	da (min.)	Da (max.)	R (max.)	
51100	10	24	11	9	0.3	10100	14000	6700	10000	18	16	0.3	0.019
51200		26	12	11	0.6	12800	17100	6000	9000	20	16	0.6	0.028
51101	12	26	13	9	0.3	10400	15400	6700	10000	20	18	0.3	0.021
51201		28	14	11	0.6	13300	19000	5600	8500	22	18	0.6	0.031
51102	15	28	16	9	0.3	10600	16800	6300	9500	23	20	0.3	0.023
51202		32	17	12	0.6	16700	24800	5000	7500	25	22	0.6	0.043
51103	17	30	18	9	0.3	11400	19500	6000	9500	25	22	0.3	0.025
51203		35	19	12	0.6	17300	27300	4800	7500	28	24	0.6	0.050
51104	20	35	21	10	0.3	15100	26600	5300	8000	29	26	0.3	0.037
51204		40	22	14	0.6	22500	37500	4300	6300	32	28	0.6	0.077
51105	25	42	26	11	0.6	19700	37000	4800	7100	35	32	0.6	0.056
51205		47	27	15	0.6	28000	50500	3800	5600	38	34	0.6	0.111
51305		52	27	18	1	36000	61500	3200	5000	41	36	1	0.169
51405	30	60	27	24	1	56000	89500	2600	4000	46	39	1	0.334
51106		47	32	11	0.6	20600	42000	4300	6700	40	37	0.6	0.064
51206		52	32	16	0.6	29500	58000	3400	5300	43	39	0.6	0.137
51306	35	60	32	21	1	43000	78500	2800	4300	48	42	1	0.267
51406		70	32	28	1	73000	126000	2200	3400	54	46	1	0.519
51107		52	37	12	0.6	22100	49500	4000	6000	45	42	0.6	0.081
51207	40	62	37	18	1	39500	78000	3000	4500	51	46	1	0.21
51307		68	37	24	1	56000	105000	2400	3800	55	48	1	0.386
51407		80	37	32	1.1	87500	155000	2000	3000	62	53	1	0.769
51107	45	60	42	13	0.6	27100	63000	3600	5300	52	48	0.6	0.12
51208		68	42	19	1	47500	98500	2800	4300	57	51	1	0.27
51308		78	42	26	1	70000	135000	2200	3400	63	55	1	0.536
51408		90	42	36	1.1	103000	188000	1700	2600	70	60	1	1.1
51109	50	65	47	14	0.6	28100	69000	3400	5000	57	53	0.6	0.143
51209		73	47	20	1	48000	105000	2600	4000	62	56	1	0.31
51309		85	47	28	1	80500	163000	2000	3000	69	61	1	0.672
51409	55	100	47	39	1.1	128000	246000	1600	2400	78	67	1	1.46
51110		70	52	14	0.6	29000	75500	3200	4800	62	58	0.6	0.153
51210		78	52	22	1	49000	111000	2400	3600	67	61	1	0.378
51310		95	52	31	1.1	97500	202000	1800	2800	77	68	1	0.931
51410	110	52	43	1.5	147000	288000	1400	2200	86	74	1.5	1.94	

※Above 50 inside diameter, welcome to contact ChaNa and order.

1N = 0.102kgf

Copyright © CHENA INDUSTRIAL CO.,LTD ALL Rights Reserved.