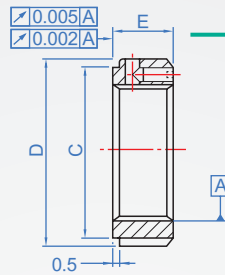
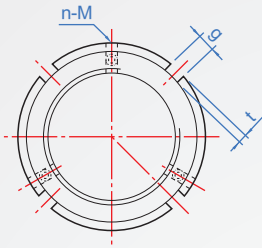


Precision Lock Nut

YSA

Axial Locking



※Axial three-point locking, thickness and YSF system the same column applies when used in an assembly environment.

Material	Hardness	Thread Accuracy	Run Out
SCM440	HRC28~32	ISO 4H (Turning)	0.005mm
		ISO 4H (Grinding)	0.002mm

How to order

YSA - M18 - 1.5 -
 TYPE Screw Pitch
 Select thread accuracy
 Internal thread turning...
 Internal thread grinding.. G

Unit : mm

Screw	Pitch	D	C	E	g	t	n-M	Locking torque max. Nm	Axial load Km	Release torque Nm
M14	1.5								-	-
M15	1	30	25	14			2- M4 x 0.7	3.5	-	-
M16	1.5								-	-
M17	1								-	-
M18	1.5	32	27	16	4				80	24.5
M20	1								-	-
M20	1.5					2			90	26
M22	1.5								90	-
M24	1.5	38	33				3- M4 x 0.7		-	-
M25	1.5								-	-
M27	1.5	40	35	18	5				130	27.5
M30	1.5	45	40					-	-	
M33	1.5	50	45					160	29.4	
M35	1.5							-	-	
M36	1.5	52	47					190	37.3	
M36	1.5A							-	-	
M40	1.5	58	52	20	6	2.5		-	-	
M42	1.5	62	56					210	42.2	
M45	1.5	65	59					-	-	
M48	1.5	70	64					240	58.8	
M50	1.5							-	-	
M52	1.5							300	65.7	
M55	2	73	68					-	-	
M56	2	75						340	73.5	
M60	2	80	73	22	7	3		-	-	
M64	2							380	81.4	
M65	2	85	78					-	-	
M68	2							460	88.2	
M70	2	92	84					-	-	
M72	2	94	86					490	96.1	
M75	2							520	102.9	
M76	2	98	90	24	8	3.5		-	-	
M80	2	105	96					-	-	
M85	2	110	102					620	112.7	
M90	2	120	108					650	127.5	
M95	2	125	113	26	10	4	3- M8 x 1.25	680	137.3	
M100	2	130	118					710	152	
M105	2	140	125					740	171.6	
M110	2	145	132	28				770	186.3	
M115	2	150	137					800	205.9	
M120	2	155	142					830	220.6	
M125	2	160	147	30	12	5		860	235.3	
M130	2	165	152					890	250	
M135	2	175	160					920	264.7	
M140	2	180	165					950	303.9	
M145	2	190	175	32	14	6		980	323.5	
M150	2	195	180					1010	352.9	
M155	3	200						1040	392.2	
M160	3	210	190	34	16	7	3- M10 x 1.5	1070	421.6	
M165	3							1100	460.8	
M170	3	220	200					1130	495.1	
M180	3	230	205	36	18	8		1160	519.6	
M190	3	240	215					1220	558.8	
M200	3	250	225	38	18	8	3- M12 x 2.0	1280	598	
								1340	637.3	