

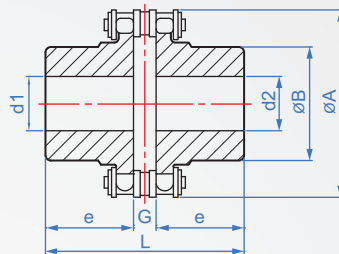
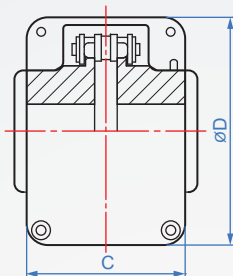
## 2 columns Chain CH423 Key slot

■ Product specialty :

Flexible. Small outer diameter but large transmission capacity. Since it is made entirely of metal, it is not affected by any environment. Easy to install and disassemble, easy to maintain.

Ontology	Chain	Shell
Steel	Steel	Aluminum

■ Operating temperature : -10 ~ +60°C



How to order

CH423 - 61 - 10x15  
TYPE    D    d1xd2

D	Inner hole designation		A	B	C	L	e	G	Allowable torque 50rpm or less (N/m)	Max. number of revolutions (RPM)	weight(kg)	
	d1 - d2 min.	max.									Ontology	Shell
61	9.5 ~ 16		45	25	57	64.9	30	4.9	100	6000	0.3	0.1
75	11 ~ 22		61	35	75	79.4	36	7.4	218	4800	0.8	0.2
92	15 ~ 30		77	50	85	99.7	45	9.7	386	4800	1.4	0.3
111	15 ~ 38		96	60	106	119.5	54	11.5	735	3600	2.6	0.6
122	19 ~ 45		106	70	130	146.2	67	15.2	931	3000	3.5	0.8
142	22 ~ 55		127	85	144	200.8	91	18.8	1754	2500	6	1.2
167	25 ~ 75		151	110	185	260.8	119	22.8	2372	2500	9.5	1.6
186	30 ~ 78		169	115	240	360.1	165	30.1	3881	2000	14	2.5
220	35 ~ 95		202	140	270	519.6	241	37.6	5586	2000	20	2.7
248	38 ~ 110		232	160	270	519.6	241	37.6	8781	1800	34	3
309	48 ~ 120		254	170	270	519.6	241	37.6	13230	1500	50	7.2
357	58 ~ 150		302	210	270	519.6	241	37.6	17150	1200	65	9
402	68 ~ 160		341	220	270	519.6	241	37.6	28616	1000	122	9.6
466	78 ~ 200		405	280	270	519.6	241	37.6	41748	1000	185	16.3
490	88 ~ 205		424	295	270	519.6	241	37.6	57036	800	288	19
570	98 ~ 260		505	375	270	519.6	241	37.6	71932	600	334	25

※Installation tolerance: angle error  $\alpha = 1^\circ$ , parallel error  $\epsilon = 2\%$  of the chain pitch.

1kgf=9.8 Newton(N)

■ New JIS keyway( DIN6885 )

Shaft aperture	b(Js9)	Tolerance	t	Tolerance	Key size	Fixing screw
9~10	3	±0.0125	1.4	+0.1 0	3x3	M4
11~12	4	±0.015	1.8		4x4	M5
13~17	5		2.3		5x5	M6
18~22	6	±0.018	2.8	6x6		
23~30	8		3	8x7	M8	
31~38	10		3.3	10x8		
39~44	12	3.3	12x8			
45~50	14	±0.021	3.8	14x9	M10	
51~58	16		4.3	16x10		
59~65	18		4.4	18x11		
66~75	20	±0.026	4.9	20x11	M12	
76~85	22		5.4	24x12		
86~95	25		5.4	25x14		M14