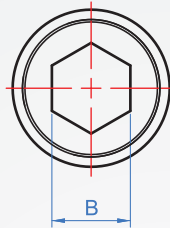
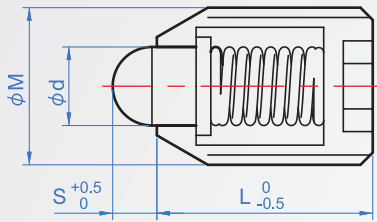


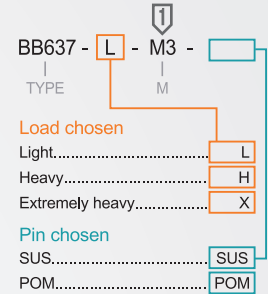
SUS - Short type
PP637

Type	Main part	Pin		Operating temperature	
		Material	Hardness		
Metal ball	Quite SUS304	SUS440C	55HRC~	-30°C~260°C	
					Light load L
					Heavy load H
Resin ball	Quite SUS304	Engineering plastics	—	-30°C~80°C	
					Light load L
					Heavy load H
Extremely heavy X					

Spring : SUS631J1



How to order



M Coarse thread	d	S	L	B	Load (N)					
					Light load L		Heavy load H		Extremely heavy X	
					min.	max.	min.	max.	min.	max.
M3	1.2	1	9	1.5	0.5	1.51	0.8	2.0	—	—
M4	2.1	1.2	9	2	1.6	4.8	2.0	9.0	4.0	11.5
M5	2.7	1.5	12	2.5	2	7.9	5.1	14.7	6.0	24.2
M6	3.2	1.5	13	3	2.8	9.9	5.5	19.6	9.4	29.5
M8	4	2	15	4	3.6	10.9	6.1	19.6	13.5	43.7
M10	5	2.5	16	5	4.2	14.6	9.6	29.4	19.1	53.3
M12	6	3.5	20	6	4.6	14.8	10.4	29.4	24.5	58.8
M16	8	4.5	22	8	9.9	29.3	18.0	58.8	26.6	78.7

Unit : mm

※ SUS type have not Nylok.

※ Load min. is initial load, the load max. are balls sink to the limit.

Load(kgf)=Load N × 0.101972