

Knuckle bearing

RN540 Both sides tread type

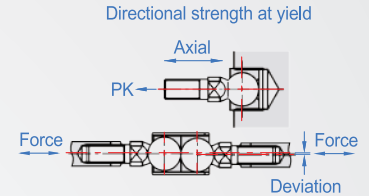
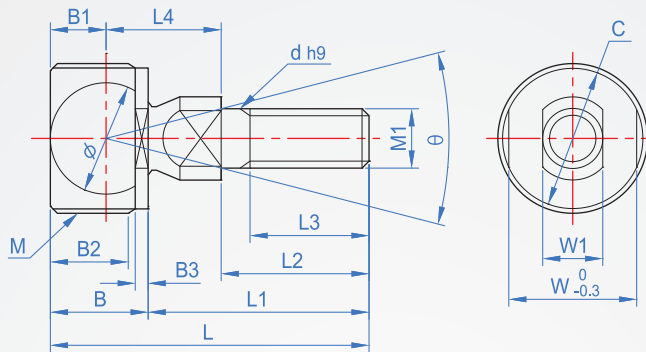
※Material : Outer ring is special alloys S35C(Trivalent chromium plating)

Ball-bar spherical surface hardness above HV650

※Ball clearance axis perpendicular direction : 0.03 mm

Axial : 0.1 mm and below

※It recommends outer ring use female thread JIS 2



How to order

1
RN540 - 6
| TYPE | No.

| NO. | External dimensions | | Clamper dimensions | | | | | Ball-bar dimensions | | | | | | | | φ | θ | Yield strength PK(kgf) | Static load capacity-Axial | | | Quality (g) |
|-----|---------------------|------|--------------------|-----|------|----|----|---------------------|----|------|----|------|----|----|----|-------|-----|------------------------|----------------------------|-----------------|----------------------|-------------|
| | MxPitch JIS 2 | L | B | B1 | B2 | B3 | W | MxPitch JIS 2 | d | L1 | L2 | L3 | I | C | W1 | | | | Right angle kgf | Stretch Cs(kgf) | Compression Csa(kgf) | |
| | | | | | | | | | | | | | | | | | | | | | | |
| 6 | M20x1.5 | 34.2 | 11.5 | 7 | 8 | | 17 | M6x1 | 6 | 22.7 | 15 | 12.2 | 11 | 10 | 8 | 12.7 | 30° | 250 | 1400 | 500 | 1220 | 30 |
| 8 | M22x1.5 | 41.5 | 14.5 | 8.5 | 11 | 2 | 19 | M8x1.25 | 8 | 27 | 17 | 16 | 12 | 12 | 10 | 15.88 | | 530 | 2510 | 1060 | 1800 | 50 |
| 10 | M25x1.5 | 55.5 | 17 | 10 | 13.5 | | 22 | M10x1.5 | 10 | 38.5 | 26 | 19.5 | 21 | 14 | 11 | 19.05 | | 740 | 3340 | 1470 | 2550 | 80 |
| 12 | M30x1.5 | 64 | 20 | 12 | 15.5 | 3 | 27 | M12x1.75 | 12 | 44 | 30 | 22 | 24 | 19 | 17 | 22.23 | | 940 | 4490 | 1870 | 3570 | 130 |

kgf=N × 0.101972