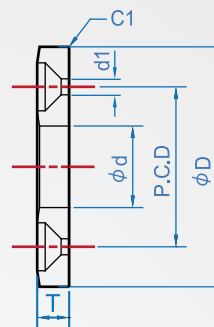
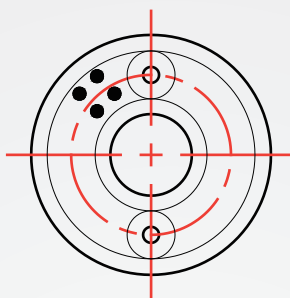
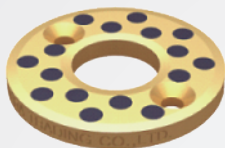


Washer

JZ259-ACopper alloy
(Two holes)**Material**High tension brass alloy
+ Solid lubricant**How to order**

JZ259 - 10-A
 TYPE No.



Unit : mm

No.	d	D	T	Assemblage hole size		
				d1	Flat head	P.C.D
10-A	10.2	30	3	3.5	M3	20
12-A	12.2	40				28
13-A	13.2	50				35
15-A	15.2					
16-A	16.2	5	5.0	M5	40	
18-A	18.2				45	
20-A	20.2					
25-A	25.2	55	5	5.0	M5	40
30-A	30.2	60				45

※Suggest using g6 tolerance guides.

Che Na

FAX 886-2688-3177

info@chena.com.tw

886-22688-3188
886-2688-3881~3No.21, Guangrong St. Shulin Dist.,
New Taipei City 238 Taiwan (R.O.C.)