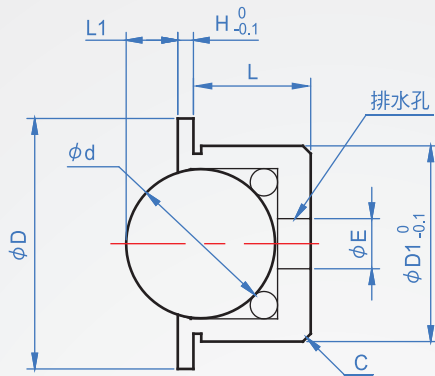
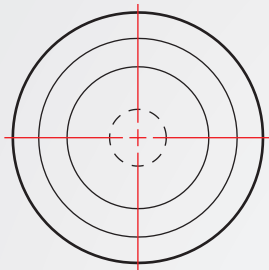


埋入型

**BR869**

全POM



主體

樹脂  
(POM)

主珠

樹脂  
(POM)

輔助珠

SUS440C  
HRC55~

How to order

BR869 - 5  
| |  
TYPE 外徑



單位：mm

D1	D	L	H	L1	d	E	C	耐荷重 N
5	7	3	0.8	1	3.18	0.8	0.5	1
7	9	4	1	1.5	4.76	1.5	0.8	2
9	11	5		1.7	5.56	2.5		4
13	15	7		2.8	8.73	3.0		7
15	17	8	1.5	3.5	10.32	3.5	1	11
20	22	11.5		5.2	15.87	5.3		14
24	26	15		6.6	19.05	6.4		21

kgf=N×0.101972